

Rapid Process Management (RPM) is a Web-based suite of enterprise tools that can help automate production art services, manage digital graphic assets, review graphics online and track the progress of the entire production process, all via a standard Web browser.



Virtual Review

This application is a Web-based virtual proofing and graphics project management software utilizing Pixel-on-Demand technology to stream native files to the user's Web browser. Graphics files can be routed for approval, data tracked and reports generated.

Dear Kris Brean
 Kris Brean [mailto:kristy.brean@alcoa.com] invites you to join the "K.B. Demo #1" Workspace at Southern Graphic Systems.
 You were granted the Approver Manager role.
 Southern Graphic Systems has identified you as a valid user.
 Username: kristy_brean@yahoo.com
 To accept the invitation, click on the following url:
 <http://www.sgsproof.com/reg.asp?p=2&w=1&v=141685339030152326&i=4309233>

 If you wish to decline this invitation, simply disregard this email or click on the following URL:
 <http://www.sgsproof.com/reg.asp?p=3&v=141685339030152326>

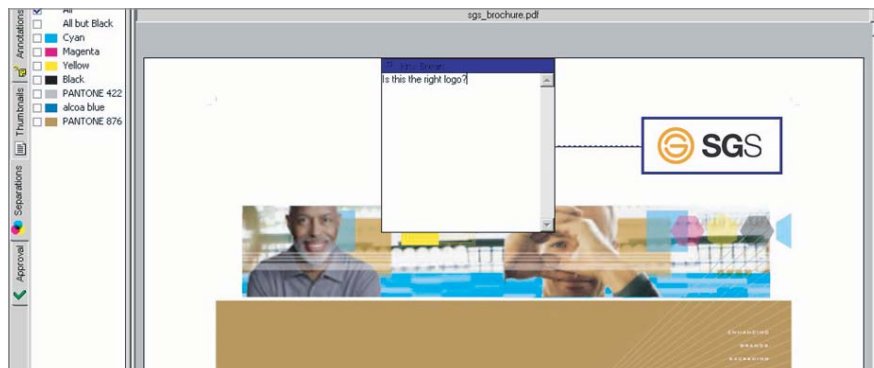
Invite

Virtual Review allows users to post files to a secure Web server for others to review and approve. Participants receive an e-mail invitation containing a link to access the files that require their attention.

File Name	Folder/File	Approval status	Publishing status	Type	Size		Uploaded	Modified	Annotations	
					Current	Total			Current	Total
largeDesAccSpread[1].log	Annotations Properties Versions (1) 1 Pages	None	UnReviewed	JPEG	50 kb	50 kb	2004-07-19	2004-07-19	-	-
largeDesignerAccents[1].log	Annotations Properties Versions (1) 1 Pages	None	UnReviewed	JPEG	44 kb	44 kb	2004-07-19	2004-07-19	-	-
sgs_brochure.pdf	Annotations Properties Versions (1) 4 Pages	None	UnReviewed	Acrobat PDF	115 kb	115 kb	2004-07-19	2004-07-19	-	-

Review

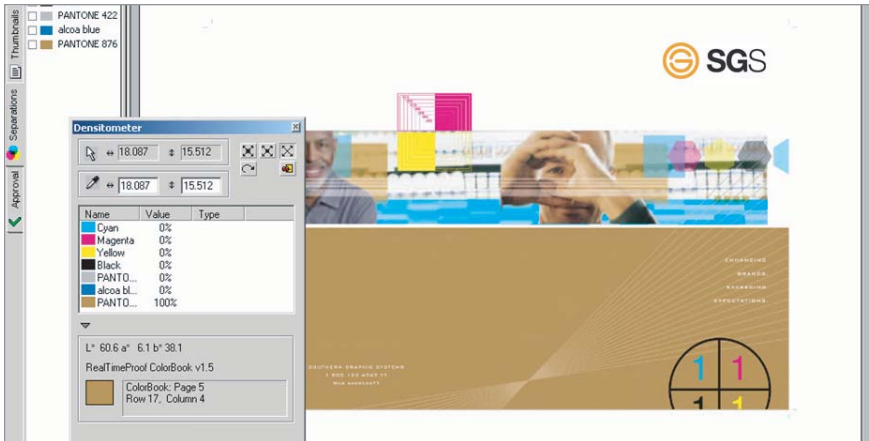
The system displays thumbnails of several standard image format files. Files can be organized in project folders containing related documents.



Annotate

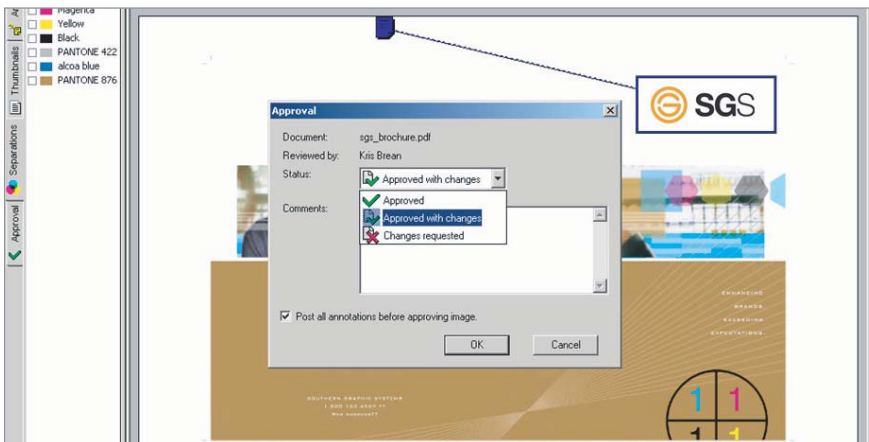
Reviewers can make annotations directly on the file displayed in their Web browser. Others, with the proper permission, can view these annotations.

Virtual Review



Measure

The Proofing Client contains tools that allow users to take precise color and distance measurements from the actual high-resolution file instead of the low-resolution PDF file used in a typical digital or PDF approval process.



Approve

Users responsible for approvals can approve, approve with changes, or request changes. Project Managers can receive automatic e-mails to alert them to key activities: change requests, approvals and rejections.

Event Subscriptions	Action time	Event	Description	User Name	Workspace / Folder
	07-19-2004 18:54	Create annotation	The user Kris Breen (kristy.breen@alcoa.com) created an annotation on "sgs_brochure.pdf" in Workspace "Alcoa Home Exteriors". The note reads as follows: "Is this the right logo?"	Kris Breen	Alcoa Home Exteriors / Designer Accents Brochure
	07-19-2004 18:49	View image	The user Kris Breen (kristy.breen@alcoa.com) viewed the file "sgs_brochure.pdf" (version 1) in project "Designer Accents Brochure" in Workspace "Alcoa Home Exteriors"	Kris Breen	Alcoa Home Exteriors / Designer Accents Brochure
	07-19-2004 18:35	View image	The user Kris Breen (kristy.breen@alcoa.com) viewed the file "largeDesAccSpread [1].jpg" (version 1) in project "Designer Accents Brochure" in Workspace "Alcoa Home Exteriors"	Kris Breen	Alcoa Home Exteriors / Designer Accents Brochure
	07-19-2004 18:34	View image	The user Kris Breen (kristy.breen@alcoa.com) viewed the file "largeDesAccSpread [1].jpg" (version 1) in project "Designer Accents Brochure" in Workspace "Alcoa Home Exteriors"	Kris Breen	Alcoa Home Exteriors / Designer Accents Brochure
	07-19-2004 18:07	Create project	The user Kris Breen (kristy.breen@alcoa.com) created the project "Siding POS" in workspace "Alcoa Home Exteriors"	Kris Breen	Alcoa Home Exteriors / Siding POS
	07-19-2004 18:06	View image	The user Kris Breen (kristy.breen@alcoa.com) viewed the file "sgs_brochure.pdf" (version 1) in project "Designer Accents Brochure" in Workspace "Alcoa Home Exteriors"	Kris Breen	Alcoa Home Exteriors / Designer Accents Brochure
	07-19-2004 18:05	View image	The user Kris Breen (kristy.breen@alcoa.com) viewed the file "largeDesAccSpread [1].jpg" (version 1) in project "Designer Accents Brochure" in Workspace "Alcoa Home Exteriors"	Kris Breen	Alcoa Home Exteriors / Designer Accents Brochure
	07-19-2004 18:03	View image	The user Kris Breen (kristy.breen@alcoa.com) viewed the file "largeDesignerAccents [1].jpg" (version 1) in project "Designer Accents Brochure" in Workspace "Alcoa Home Exteriors"	Kris Breen	Alcoa Home Exteriors / Designer Accents Brochure
	07-19-2004 18:03	View image	The user Kris Breen (kristy.breen@alcoa.com) viewed the file "largeDesAccSpread" (version 1) in project "Designer Accents Brochure" in Workspace "Alcoa Home Exteriors"	Kris Breen	Alcoa Home Exteriors / Designer Accents Brochure

Report

Custom Reports can be generated to capture key data: which user approved a file, when it was approved or rejected, and revision dates. The system generates a CSV file that can be opened and sorted in Excel or other standard spreadsheet applications.